

NV GOLD CORPORATION

October 2014

Surselva Project Overview

John E. Watson - President and CEO

TSX.V: NVX

Surselva/Medel Exploration Project Canton Graubunden, Switzerland



SwissGold Exploration AG

Wholly-owned Subsidiary of NVX

Surselva Project Area Overview

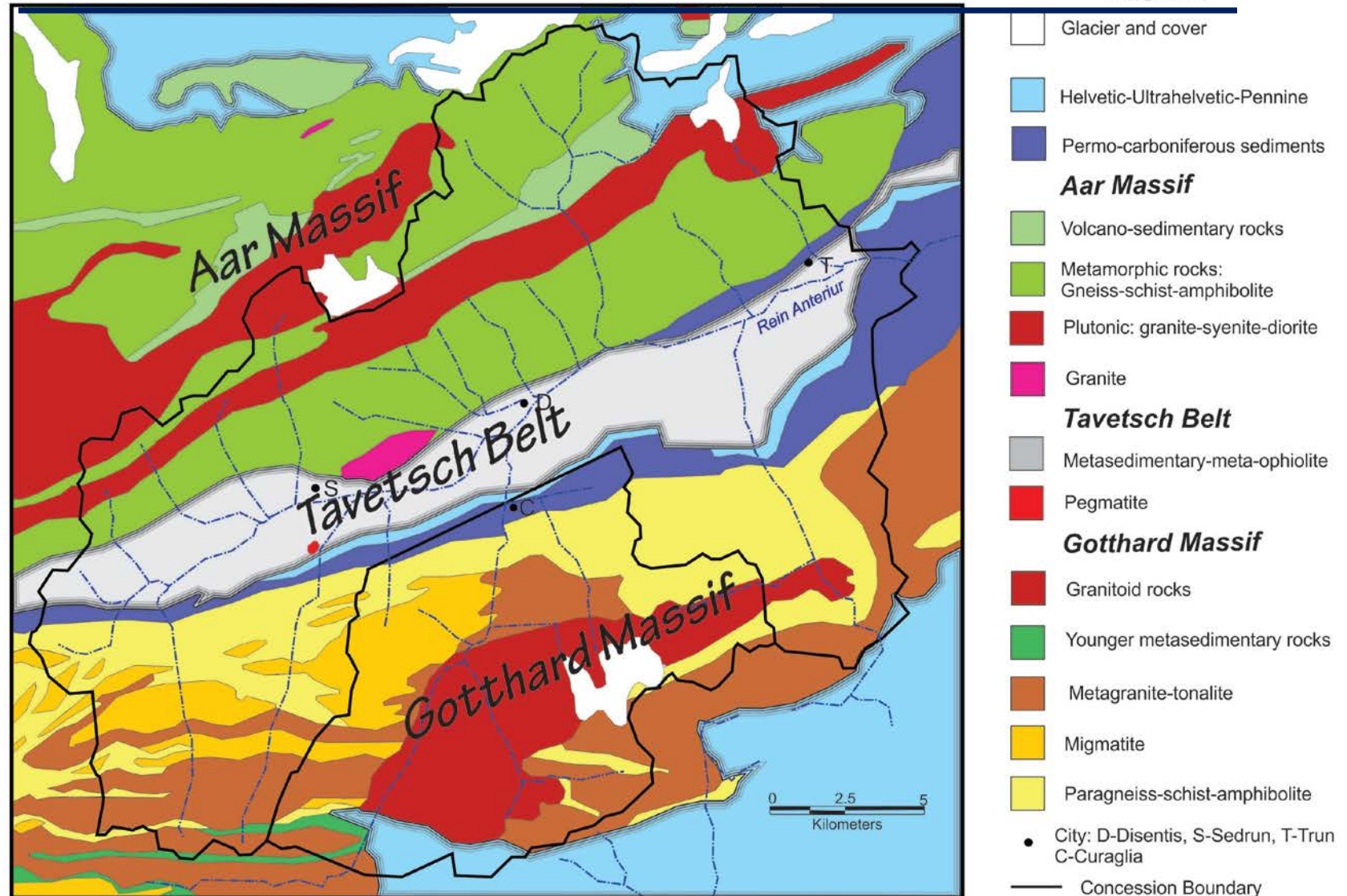
- Known gold system in SE Switzerland
- Informal placer gold production for 1,800 years
- Drilling (1986-1991) yielded significant Intercepts
- 224 Sq. Km. land position (District-scale)
- 2011 surface program completed by NVX

Surselva Permit area: view east down the Valley of the Vorderrhein past the town of Disentis.



Medel Target area: view to the west down Val Medel.

General Geology of the Surselva Project Area



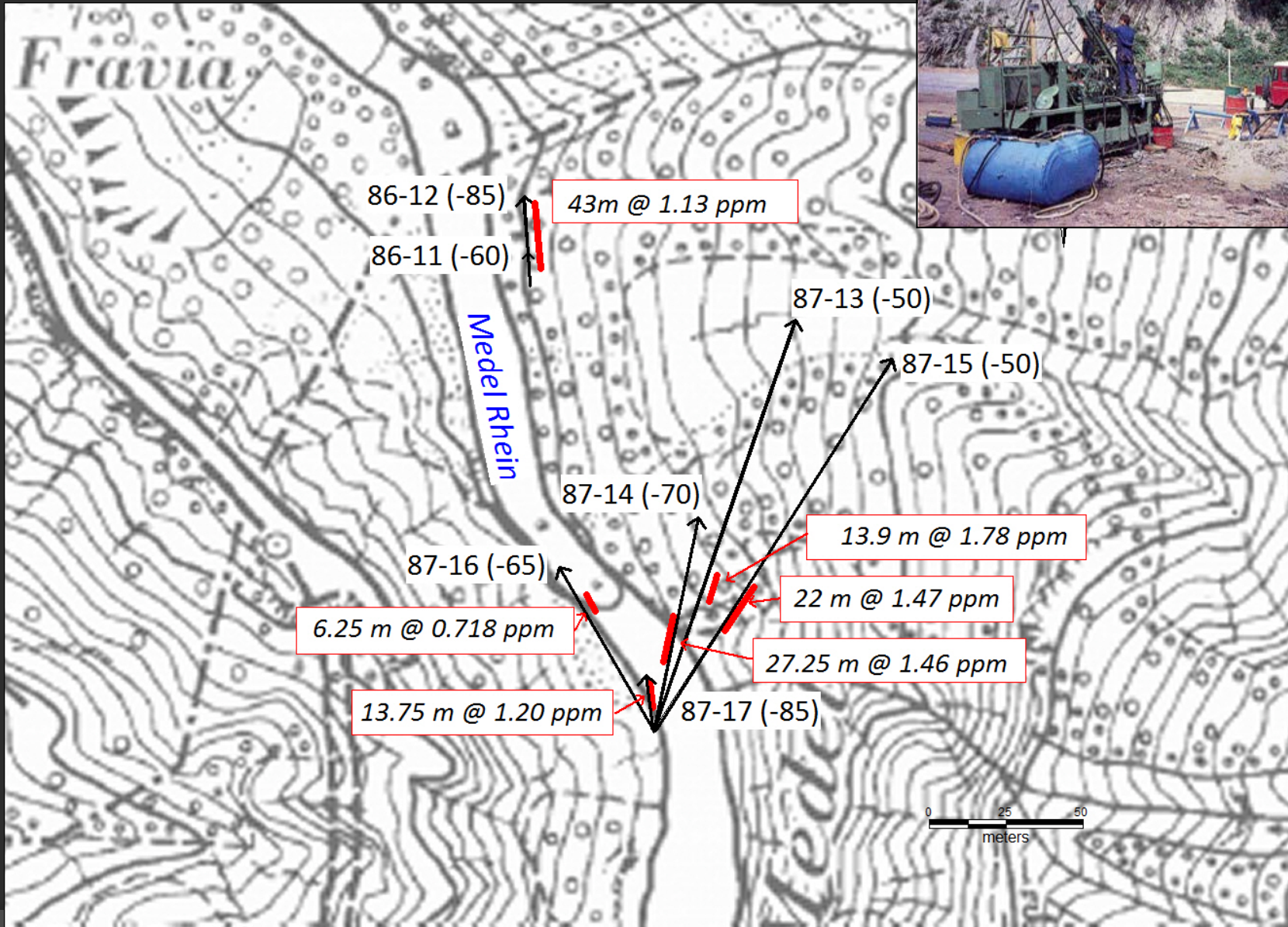
Gold mineralization hosted within crystalline rocks of the Gotthard massif and Tavetsch belt.

Surselva Project

HISTORY

- Extensive placer gold occurrences long known, yet no mining history
- Discovery of bedrock gold in 1981 by David Knopf and Karl Naert
- Micham-Narex jv drilled 17 holes – 3865 meters – near Lukmanier in 1986-87
- Micham drilled two holes – 403.5 meters – in Val Plattas in 1991
One of these holes had 1.13 g/t Au over 75 meters
- MinAlp conducted surface exploration during 2006-2008, creating an exceptional technical database
- SwissGold Exploration (NV Gold Corp) initiated exploration in 2011
- 5-Year Permits Granted October 2014

1987 Exploration drilling in Lukmanier gorge



Surselva Project

2011 NVX Program Results

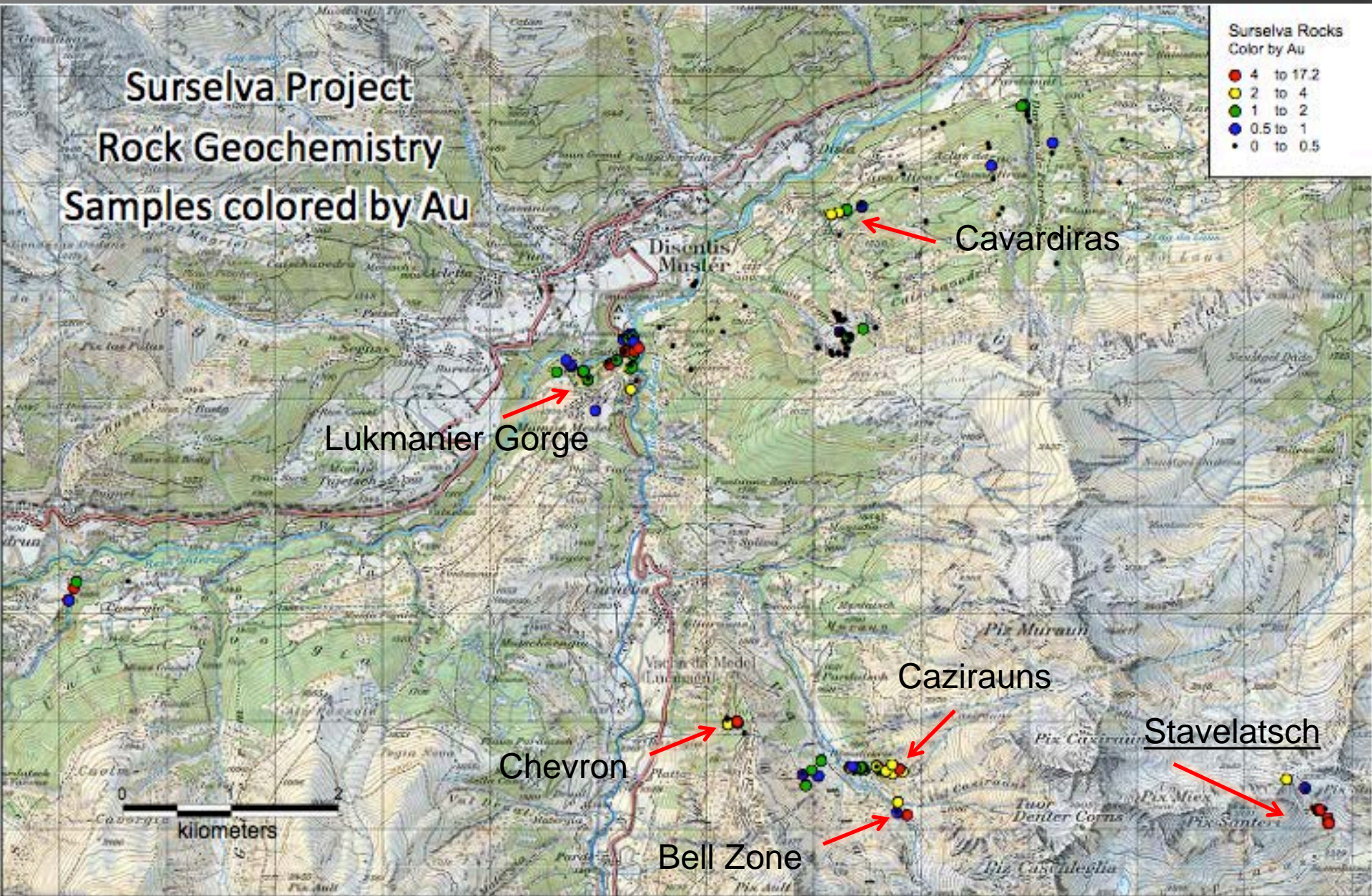
- Exploration conducted by team of Swiss, Canadian and US geologists.
- Project-scale geological reconnaissance and rock geochemistry.
- Geochemistry: 309 surface rock samples
 - Select samples from outcrops & road cuts
 - Mineralized quartz-sericite schist units widespread
 - Values up to 17.4 g/t Au in outcrop
- 279 soil geochemical samples (13.5 line Km)
 - Geochemical enrichments identified in areas of poor outcrop
 - Soil Au values up to 1 g/t Au
- Primary target areas identified:
 - Chevron-Cazirauns : 2km X 2km (Medel Target area)
 - Tavetsch Zone: 7km X 2km (Surselva area)

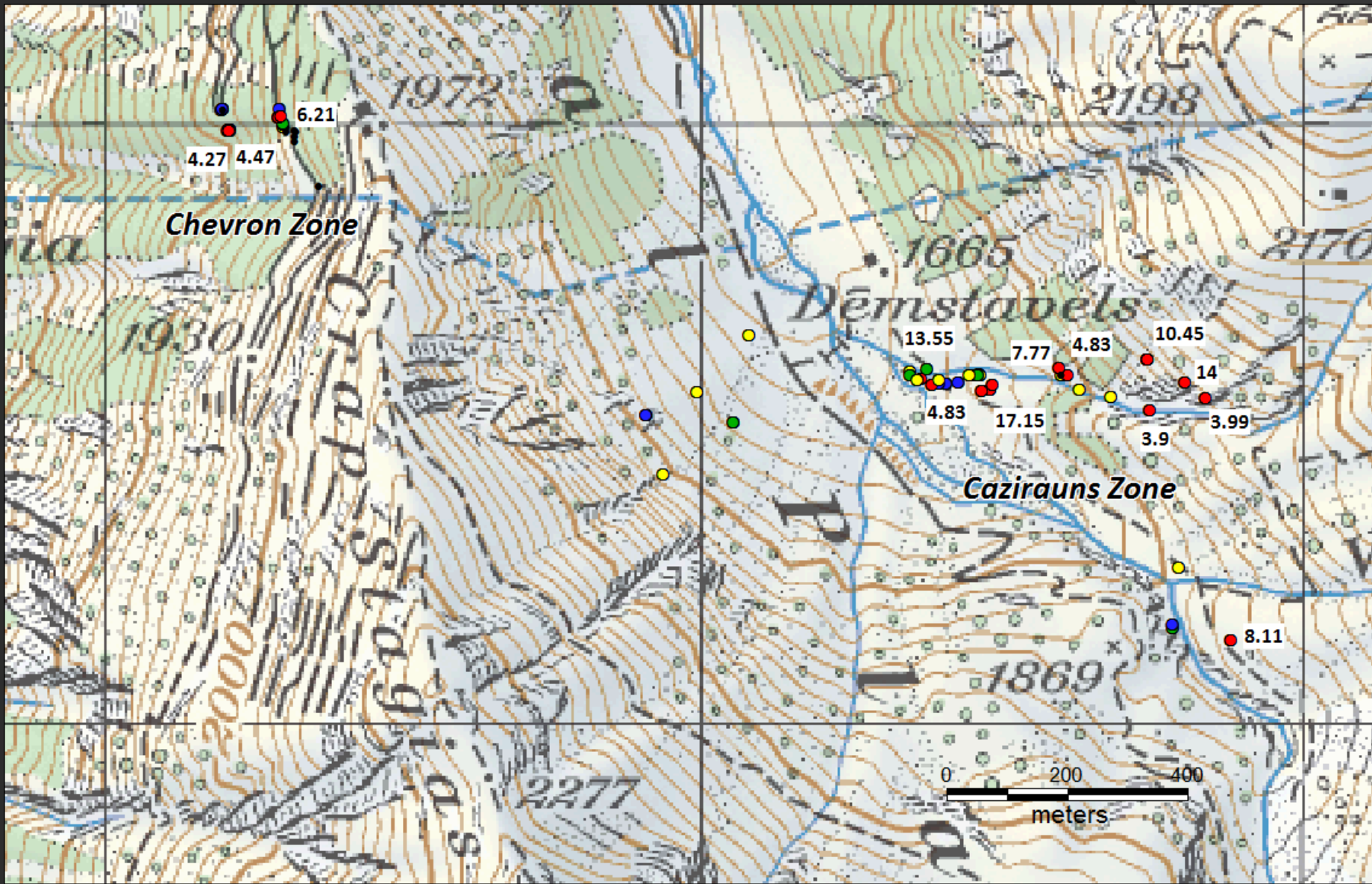


Sericite-quartz schist with disseminated to semi-massive pyrite-arsenopyrite \pm ankerite \pm fuchsite

Gold mineralization is widespread

Surselva Project Rock Geochemistry Samples colored by Au

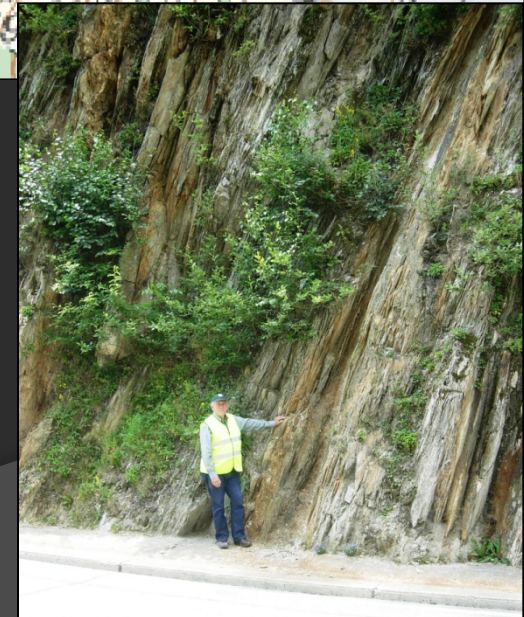


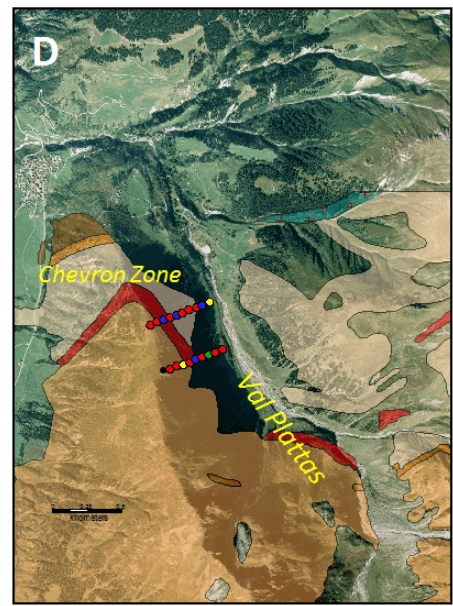
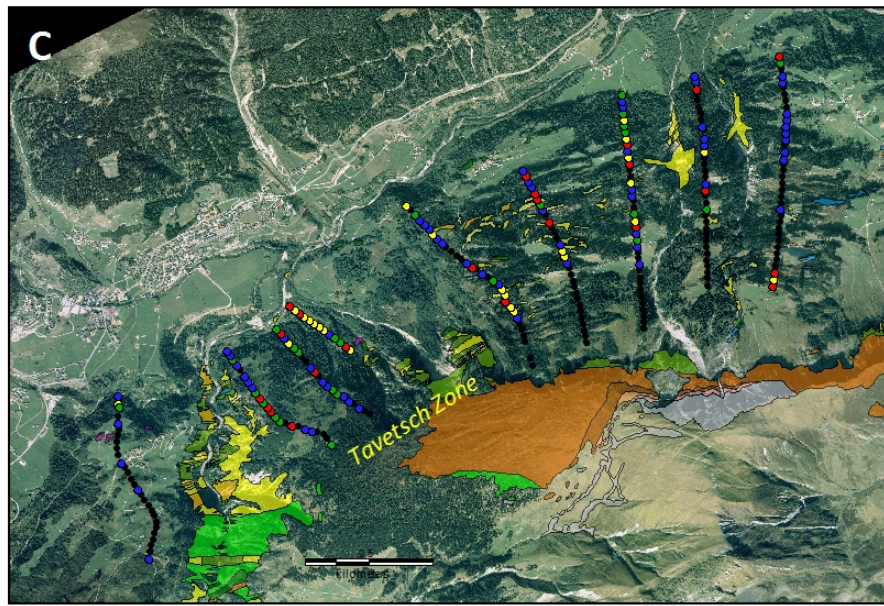
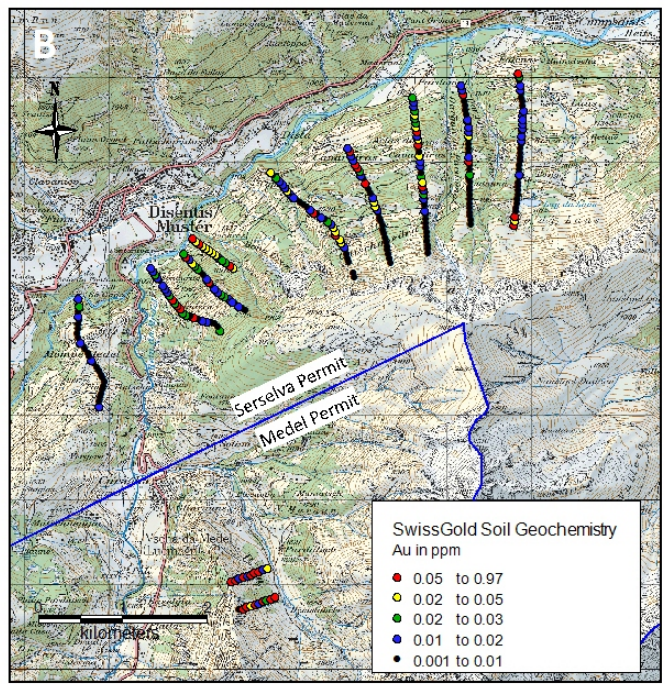
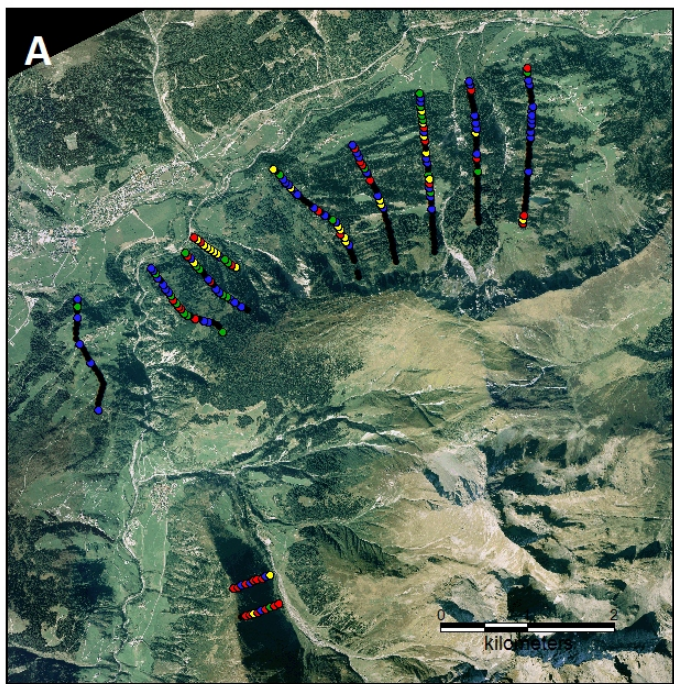


SwissGold 2011 rock geochemical results in Val Plattas - Chevron and Cazirauns prospect areas. (Of 50 samples, 36 were > 1 g/t Au and 7 were > 5 g/t Au)



SwissGold 2011 rock geochemistry in Lukmanier gorge and the Tavetsch zone. Numbers are select gold grade in g/t.





Multielement soil geochemistry provides exploration guidance where there is no outcrop.

Surselva Project

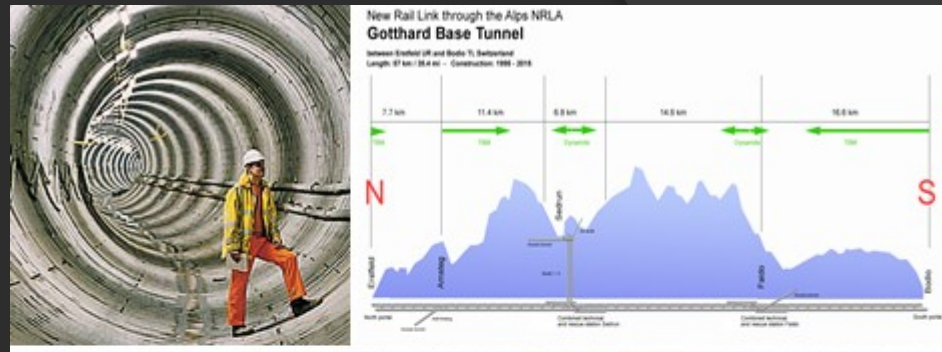
Environmental and Community Concerns

Can a Mine Be Developed in Switzerland?

- Over 10,000 km of tunnels for highways & trains
- AlpTransit Tunnel access located just west of project area
 - 57 km tunnel for train service
 - Over 500 miners in Sedrun
 - >20MM tons brought to surface for disposal at Sedrun
- Surselva area wants new employment opportunities
- Would not be first European underground mine
- Underground techniques have very small footprint
- Local communes have large say in approval
 - Mining Law vote and Permit approval received

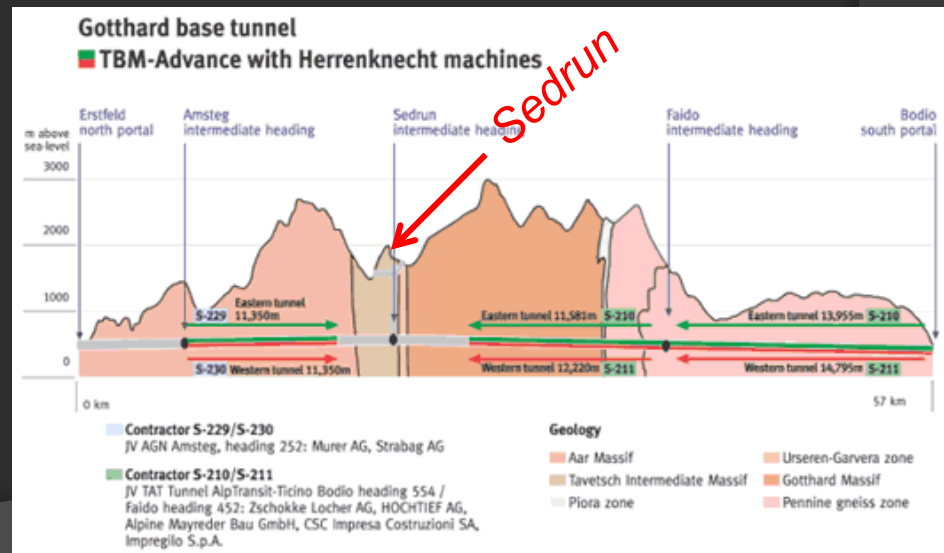


Sedrun portal



Gotthard Base Tunnel

- 57 kilometers length
- 152 km of tunnels and shafts
- 9 meter diameter bores
- maximum depth 2500 meters
- operational 2016
- demonstration of responsible “mining”



Surselva Project Summary

District-Scale project (>220 Square Kilometers)

several +Sq-km prospect targets already identified

Ore-grade gold concentrations in outcrop (8 samples > 10 g/t Au)

Previous drilling yielded good gold grades and mineralized thickness

Excellent location and skilled labor pool

Good community support

Capable leadership: SwissGold Managing Director Ernst Schönbächler

World-class targets – a world-class prospect